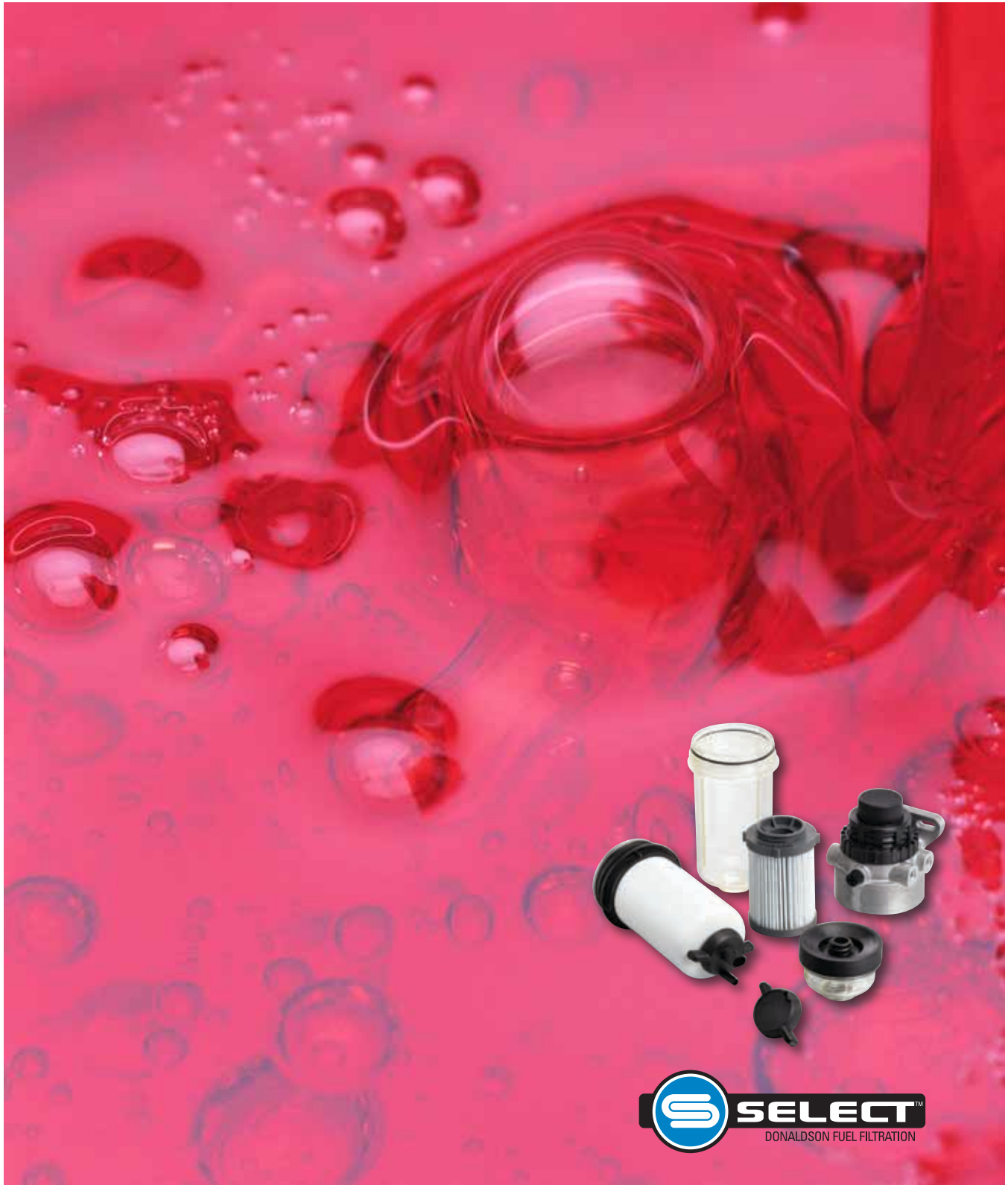




Your Best Choice for OEM Filtration Technology

SELECT™ Fuel Filtration





Design Philosophy

Superior performance, integrated features,
and flexibility to meet today's market and
application demands

OEM Focus

Quality you expect, performance you need,
and support you won't find anywhere else

Global Commitment

Global reach with local support,
flawless execution and delivery



Modular Fuel Solutions

Donaldson SELECT™ filtration technology provides the latest fuel filtration advancements for Original Equipment Manufacturers.

The SELECT system offers highly configurable components that can be packaged with our advanced Synteq XP™ Media Technology – or with other Donaldson media offerings – to address today's fuel challenges.

Component Flexibility

Versatile head options are interchangeable and can be configured with a reusable housing and disposable cartridge or a metal spin-on filter. Heating and sensor add-on options are available.

Environmental Care

Application flexibility designed into the system supports regional environmental practices. For global areas where recycling is the preferred environmental care method, Donaldson offers a metal spin-on options. The alternative, a metal-free cartridge, can be easily crushed or fully incinerated.

Water Management Options

SELECT systems are available with add-on water collection bowls or as a transparent housing. Both options provide quick visual water inspection. Donaldson Twist&Drain™ valves with built in water-in-fuel (WIF) sensors are available for easy water management.

Industry Shaping Filtration Technology

Synteq XP™ Media Technology

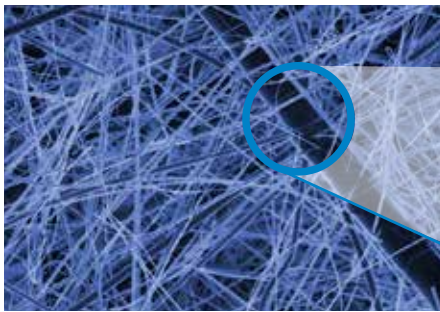
Developed specifically to overcome the evolving challenges of today's fuels

Donaldson's ground-breaking Synteq XP filter media for Tier 4 engines takes fuel filtration performance to a whole new level by providing enhanced engine and system component protection options including:

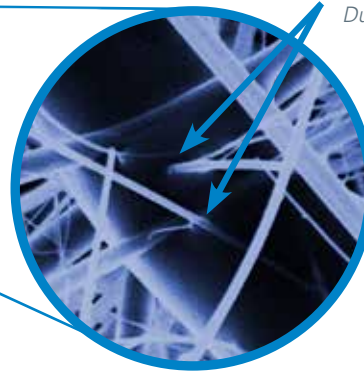
- Higher efficiency for optimal engine protection, or
- Extended filter life (up to 2 to 3 times that of traditional filter media)

Versatile and smaller filter packaging configuration options are available for secondary fuel filtration.

Synteq XP offers better contaminant removal – and better contaminant retention – all under the dynamic operating conditions that your engines and equipment experience every day.



Donaldson's proprietary Synteq XP nanofiber media creates small, consistent inter-fiber spacing – increasing filter capacity. These unobstructed pores result in reduced pressure drop and increased surface area for capturing and retaining smaller particles.



Resin-free, thermally bonded fibers

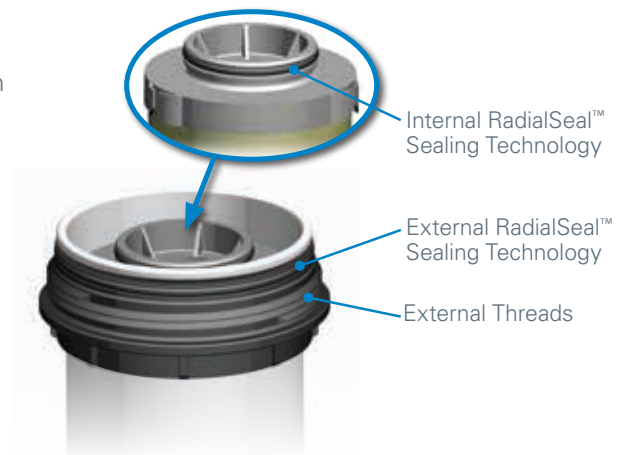
During the media manufacturing process, the surface of the binding fiber is heat-fused to bond to the surrounding micro-glass – no resin webbing to block pores.



Enhanced Reliability

Donaldson pioneered the RadialSeal™ design for air filtration more than 20 years ago. We've applied this proven concept to fuel filtration in order to create a filter that is structurally stronger and to improve the reliability of the interface between filter and engine.

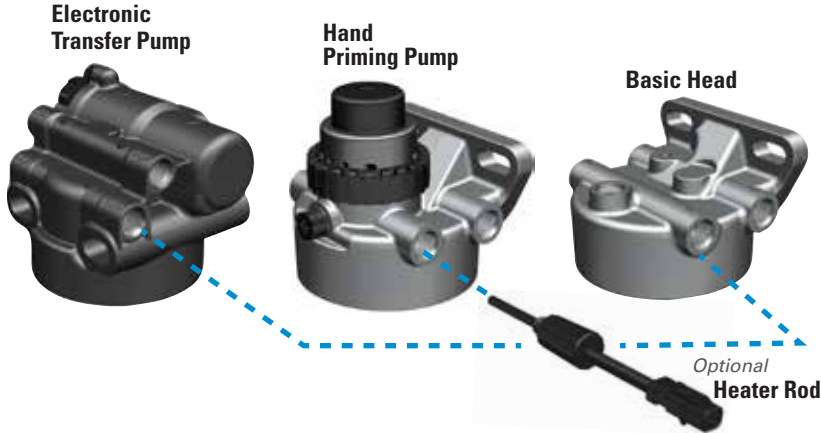
The improved sealing reliability helps protect engines from harm, even in extreme operating conditions. By moving the threads outward, the RadialSeal interface increases the surface area to provide a robust connection with superior vibration resistance, a common challenge in heavy-duty applications.



Global Presence with Local Support

Donaldson is established throughout the world to support global and regional customers. Our locations provide engineering resources, project management, a global sales team, marketing support, manufacturing and distribution at regional levels. Our manufacturing facilities are ISO 14001 and ISO/TS16949 certified.

SELECT A HEAD



Low Pressure Fuel Applications up to 60 GHP (227 LPH)

Create a custom solution from these ready-to-use **SELECT** components.

Specifications

Operating Pressure*: 100 psi (6.9 bar)

Flow Rate**: up to 60 GPH (227 LPH)

Temperature Range*:

-40° to 250°F (-40° to 121°C)

Fuel compatibility options up to B100

Porting Size Options

9/16 - 18 SAE

M14x1.5 mm

M16x1.5 mm

Application customization

Pump Options

Electronic Transfer Pump:

12V or 24V

brushed or brushless motor types available

Hand Priming Pump

Electric Heating Options

12V or 24V

Thermocouple heater rod, or

PTC (Positive Temperature Coefficient) heater plate

Air Relief Valve

Automatic or manual

Media Options

Custom performance packaging with

advanced Synteq XP media technology,

Synteq or standard cellulose media

Clear Water Collection Bowl

Visible Capacity: 80 ml

(filter housing sump holds additional water)

Drain Valve: Twist&Drain™ configurations

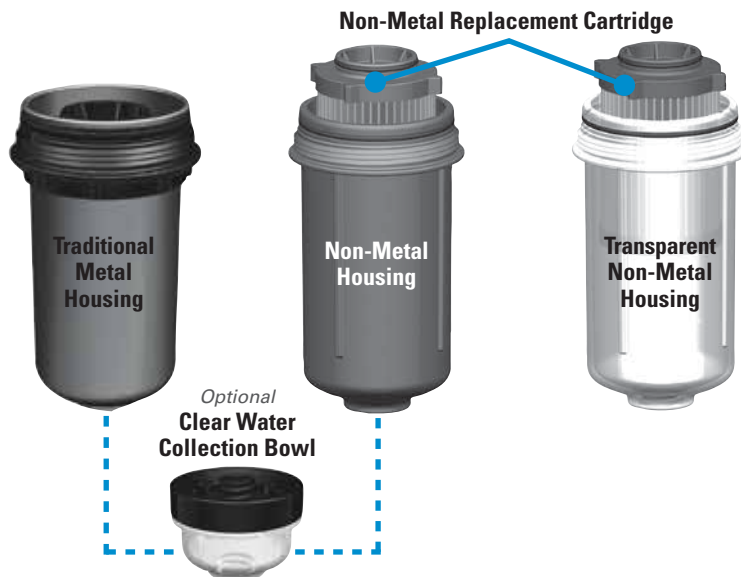
Water-in-Fuel Sensor

Digital or passive options with multiple connector interfaces

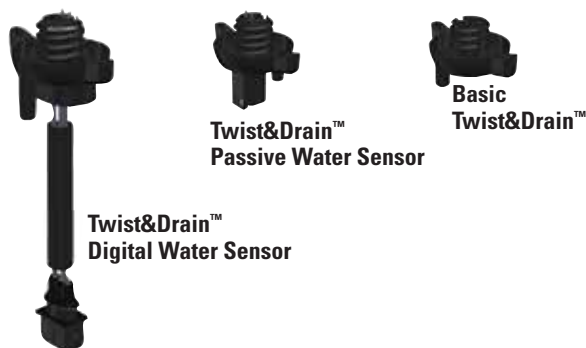
* Dependent on application and configuration

** Maximum flow rate may be exceeded for certain applications and configurations

SELECT A FILTER



SELECT A DRAIN VALVE



Donaldson Company, Inc.
PO Box 1299
Minneapolis, MN
55440-1299

North America 800-374-1374

Mexico 52-449-910-6150

Latin Am. & Caribbean 52-449-910-6150

Brazil 55-11-2119-1604

Europe 32-16-38-3811

www.donaldson.com

www.donaldsonOEMfiltration.com

Brochure No. F111243 ENG (03/14)

© 2014 Donaldson Company, Inc. All rights reserved. Donaldson Company, Inc. reserves the right to change or discontinue any model or specification at any time and without notice. Printed in the U.S.A.

South Africa 27-11-997-6000

South East Asia 65-6311-7373

Greater China 852-2405-8388

Japan 81-42-540-4112

Korea 82-2-517-3333

Australia 61-02-4350-2033

India 91-124-2290060