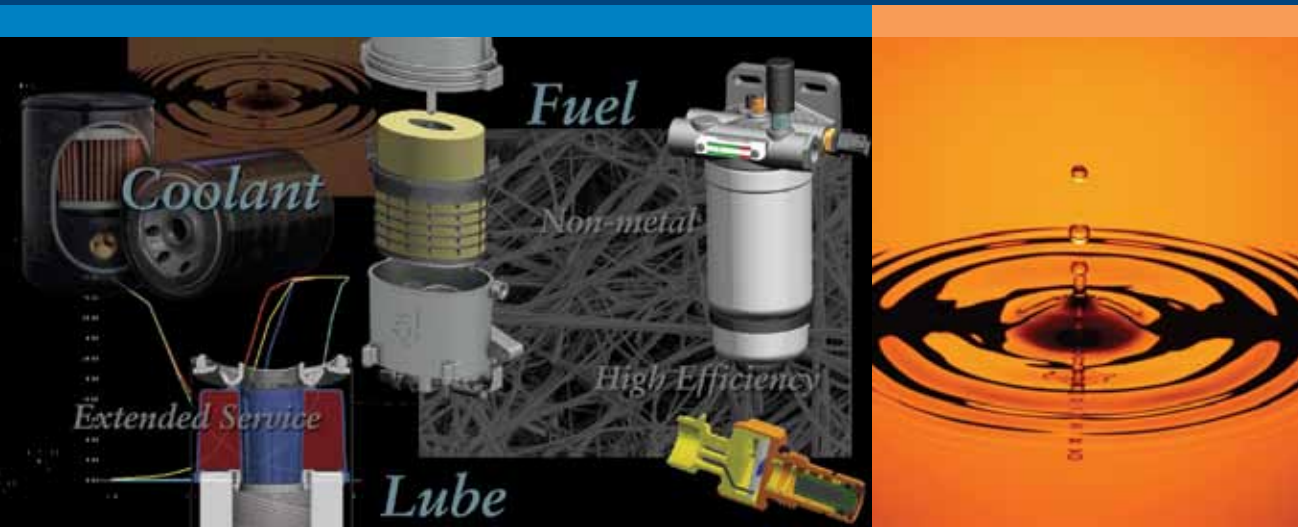


Lube, Fuel and Coolant Filtration Technologies for Diesel Engines



Global emissions regulations, alternative fuels and end-user demands are having a major impact on engine designs.

Our innovative filtration technologies provide improved filtration performance and unique features to ensure the filters you approve will protect the engine during its life.

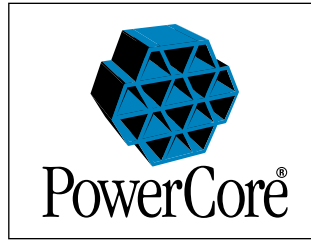
Let Donaldson scientists and liquid engineers be your strategic resource to support your global business objectives.

Donaldson has 25+ years of engine liquid filtration experience and 35+ years in hydraulic filtration

Donaldson®

Filter Media Technology choices for all conditions

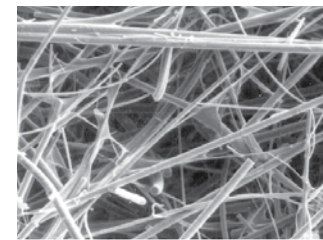
- Variety of filtration media choices that deliver maximum engine protection performance and service life
- Applications for current oils and fuels, including ULSD and Bio-diesel blends
- Medias include PowerCore® Filtration Technology and Synteq™ Filtration Technology



PowerCore® Filtration Technology for fuel. The media consists of alternating layers of media and a plastic flow grid.

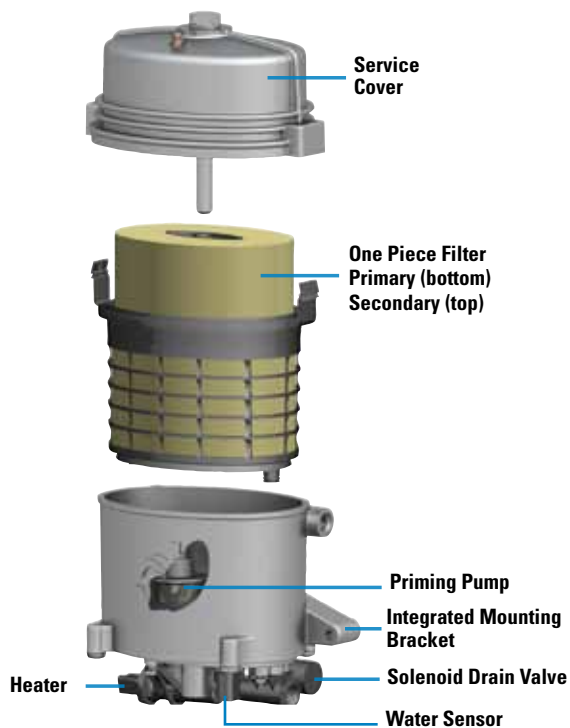


Synteq™ Filtration Media Technology for enhanced emulsified water removal in fuel



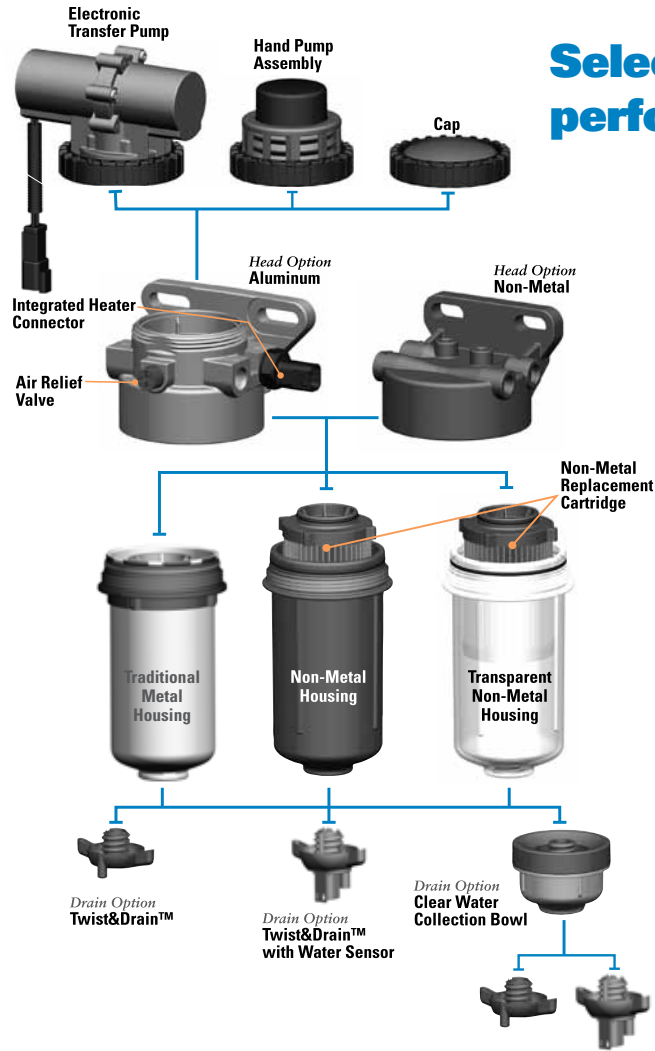
Scanning electron microscope image of Synteq™ high efficiency filtration media

PowerCore® Fuel Processor an easy-to-service, compact package



- Single, proprietary, non-metal filter compared to systems with separate primary and secondary spin-on style filters
- Smaller overall size saves under-hood space
- Custom sensors, water drain, heater, and indicators
- Significantly more filter life compared to current system
- Contains PowerCore Filtration Technology
- Integrated mounting bracket and priming pump
- Reference Brochure: F111213

Select Filtration Technology



Select Fuel Filtration offers performance and design flexibility



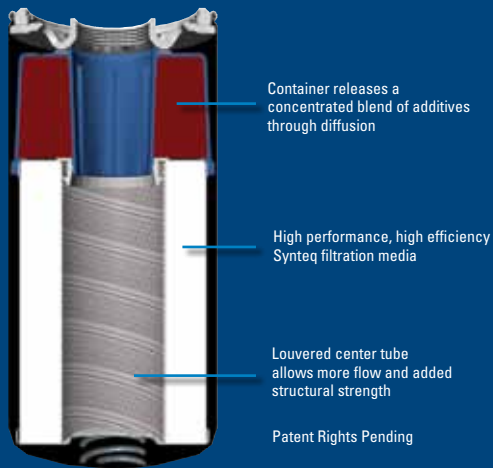
- Customized media offerings to meet efficiency and capacity needs for even the most extreme operating conditions
- Common interface can accommodate non-metal cartridge or traditional metal spin-on filters
- Service choice based on local market demands increase customer satisfaction
- Environmentally responsible
- Reference Brochure: F111243

Advanced Oil Filtration System keeps your engines operating at peak performance

- Design utilizes a common interface for a non-metal cartridge or spin-on filter
 - Provides application flexibility
 - Minimizes environmental impact
- Enhanced reliability
 - Radial seal technology
 - Structurally stronger
- Longer filter life possible with newer media technologies
- Reference Brochure: F111238

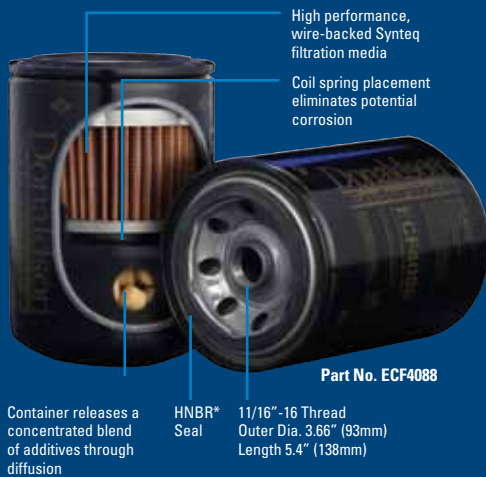


Additive Replenishment Technology for lube and coolant filters



Long-life lube filter maintains oil quality

- Controlled chemical release process to meet service interval demands
- Oil drain extensions
- Enhanced engine component protection
- Help neutralize by-products of combustion (i.e. soot & acid)
- Additive chemistry matched to application requirements
- Customized to existing filter interface – no system modification required
- Proven technology
- No special filter disposal requirements



Long-life coolant filter reduces maintenance

Through a controlled chemical release process, the filter replenishes the additives in standard diesel engine coolant. It allows you to extend your coolant maintenance interval up to once a year or 150,000 miles.

- Additive replenishment built into the filter
- Direct replacement to standard filter
- Synteq™ Filtration Media
- Reference Brochure No. F11228



Donaldson

Donaldson Company, Inc.
Minneapolis, MN
55440-1299

www.donaldson.com

United States & Canada
Latin America & Caribbean
Mexico
India
Italy
Germany
Belgium
United Kingdom
Hong Kong
Singapore
South Africa
Australia

Brochure No. F11222 (06/11)

© 2011 Donaldson Company, Inc. All rights reserved. Printed in U.S.A.
Donaldson Company, Inc. reserves the right to change or discontinue any model or specification at any time and without notice.